

## Louisville Central Community Center

LCCC began its proud tradition of services as “Market Street Neighborhood House” in 1948 after being founded by the Shawnee Women’s Club and Shawnee Post American Legion with important financial support from the Kiwanis Club of Louisville. Its purpose was to provide “activities for pre-school children and teenage youth and home visits by volunteers who cared about others.”

In 1950 the two groups requested assistance from the Community Chest, now Metro United Way. In 1952, a building was purchased and remodeled at 1021 W. Market Street. Later, Market Street Neighborhood House became a settlement house and was an active member under the leadership of Jane Addams, who founded the historic Hull House in Chicago in 1889.

Market Street Neighborhood House, renamed Louisville Central Community Center in 1975, expanded its services to include the historic Russell and surrounding inner-city neighborhoods in Louisville. Today, LCCC helps thousands of individuals and families each year in the areas of early childhood education, youth development, employment and homeownership and civic engagement.



## Chef Space Food Incubator

Opened in 2015, Chef Space is a food business accelerator located in Louisville’s West End that provides commercial kitchen space and business training for entrepreneurs to start food-related ventures. For over five years, Chef Space has been the only place in Louisville to start and grow your food business and has helped over 65 entrepreneurs start food related ventures, has created 400 full and part time jobs, and has seen 12 businesses grow to establish brick and mortar locations. With industrial equipment, production workspace and tailored support, Chef Space has everything you need to get started.



Additionally, three properties on 18th Street are planned to be allocated as physical locations of food startups for people who graduate from Chef Space will have the opportunity to use the spaces to establish themselves and their businesses. The current homes would be fixed up, inside and out, but will keep the residential look. The vacant lot next to the homes, which is owned by Metro Louisville, will turn into an outdoor eating space.

## The Village @ West Jefferson

A \$7.4 million project, The Villages @ West Jefferson is a multi-use development project involved renovating St. Peter’s 121 years edifice and turning some vacant property next to the church into an office and retail development. The proposed development is already 70 percent pre-leased with the tenants to include a minority-owned health clinic, a counseling service, and a cafe operated by the New Legacy Reentry Corporation. The Louisville Metro Housing Authority will also have an office in The Village @ West Jefferson as part of



## The Village @ West Jefferson Cont'd

Vision Russell, its effort to revitalize Russell using a \$30 million Choice Neighborhood Initiative grant from the Department of Housing and Urban Department.

## Louisville Urban League Norton Sports Health and Learning Complex

A 24-acre West End Sports and Learning Complex will focus on the indoor track season, which runs from December through March, and will be designed to host a slew of sporting events potentially sponsored by organizations such as USA Track and Field, the NCAA, colleges and universities and local and regional public and private schools. It is expected to bring tens of thousands of people and millions in economic impact during track season. Completion of the Complex is scheduled for December, with opening scheduled for January 2021.



## The Academy at Shawnee

The Academy at Shawnee, also known as Shawnee, is leading the way in the Academies of Louisville initiative as 1 of the original 11 JCPS high schools that opened as an all-Academy school in the 2018-19 school year. With a vibrant community base and increasing business partnerships, the Freshman Academy, Health & Human Services Academy, and AIM Academy are building strong, innovative leaders for our future while maintaining the tradition and heritage of our Aviation magnet program.

## Shawnee Park

In 1892, Frederick Law Olmsted designed the 284-acre Shawnee Park using the low-lying riverfront setting and topography of the land as inspiration and as the great public space of the city. The two principal features of the park are the concourses that afford extensive views and the expansive Great Lawn, a signature Olmsted design feature. Intended as Louisville's spot for large formal gatherings, the Great Lawn is enclosed with border plantings and a tree-lined circular drive. This open space was adaptable for both large gatherings and sports uses. The park contained the only formal garden in Louisville's system and for a time employed full time gardeners.



## AMPED

The Academy of Music Production Education and Development (AMPED) has two campuses situated in West Louisville, a community that in the past few decades has experienced considerable blight. AMPED hosts programs throughout Louisville, at schools and community centers, but the two main centers are in ZIP codes 40211 and 40203, where the poverty rates are 27% and 44% respectively. AMPED serves youth ages 8-18. Jefferson



## AMPED Cont'd

County has the highest opioid overdose deaths in Kentucky, and western and southern Louisville have the highest rates of both drug use and overdose deaths in Louisville; OSTs show promise in deterring kids from drug use and violence.

## West End School

West End School is an academically rigorous, free boarding school in Louisville, Kentucky for boys, grades Pre-K through 8. The school was founded in 2005 by Robert Blair and his wife Debbie. The focus of the school is to help "at risk" boys from the West End neighborhoods of Louisville, Kentucky.



## Muhammad Ali Childhood Home

Located at 3302 Grand Avenue and dating back to 1942, the childhood home of Muhammad Ali, is a simple, rectangular shaped one-story, two-bedroom property with an ante-room, kitchen, and a single full bathroom. Later in time, a back recreation room was added onto the house by Cassius Sr. In all, the house is approximately 1,200 square feet. The Clay family purchased the house on March 28, 1947. Cassius Jr. was five years old at the time. The entire Clay family resided at the 3302 Grand Ave. house full-time from 1947 through 1961. After the Clay family relocated, the 3302 Grand Ave. house was sold four times, and in 2013 the property was sold to its current owners, Jared Weiss and George Bochetto, who have since restored the house into a Museum showcasing Muhammad Ali's childhood and historic legacy.



## Reynolds Metal Co.

1919 Reynolds begins a foil business in Louisville and in 2016, Reynolds Consumer Products invested \$4 million to expand its Louisville facilities at 2827 Hale Ave. The Louisville foil plant packages and produces all aluminum foil sold under the Reynolds Wrap brand.



## Goodwill Industries of Kentucky Future Headquarters

Goodwill Industries of Kentucky Inc. has acquired a roughly 20-acre site once home to a Sypris Technologies plant at 28th and Broadway that it scouted for a new headquarters and campus. Goodwill closed on the acquisition April 2020 for \$1.7 million and is expected to employ more than 60 people to work out of the facility, not counting growth over time.



## Lyles Mall/Kroger on Broadway

Available retail and office space located on Broadway. After a football career at the University of Louisville and later in the NFL with the 49ers and the Colts, Lenny Lyles developed the Lyles Mall. The Kroger located in this location is one of two full-size grocery stores in west Louisville (smaller Kroger on Bank St in Portland).



## HOPE Wellness Center

The objective of HOPE Wellness Center is to offer shared space to medical professionals to offer high quality care, prevention, and educational programs to residents in West Louisville that will empower individuals to live the healthiest lifestyle possible. Allowing medical professionals in all fields the opportunity to launch their own medical practice, the shared space concept affords the accommodations of a full medical facility with at a very affordable rate. The space is specifically located in an area of our city that needs more access to quality care. To date there is no other urgent care service located in west Louisville.

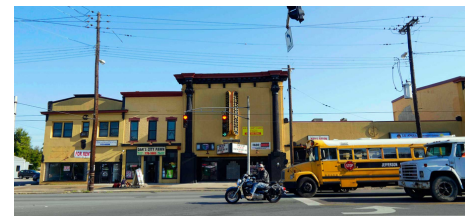


## OneWest

OneWest is a community development corporation committed to elevating our entire city through commercial development growth in west Louisville. Real estate investment/development in commercial and mixed-use properties along business corridors include locally-owned and operated restaurants with a focus on fresh, healthy ingredients; retail stores with offerings such as clothing, home and garden supplies, or specialty items; office space for small or mid-size businesses in support of west Louisville entrepreneurship; a transformed streetscape with clean and safe pedestrian-friendly walkways, trees and signage; and new opportunities to convene like-minded partners who want to instill community pride, imagination, and a sense of self and place.

## Royal Theatre Development

A OneWest development, 1731 – 1823 W Broadway's 37,725 sq ft is a mixed use 10-Unit Commercial Retail Center. This site is being improved with six contiguous one, two- and three-story buildings – and two detached. The eight buildings are home to a convenience store, restaurant, daycare center, dentist, nail salon, two barbershops, a clothing store, and a pawn shop.



## Louisville Urban League Headquarters

The Louisville Urban League is a nonprofit, nonpartisan, community service organization dedicated to eliminating racism and its adverse impacts on our community. The mission is to assist African Americans and other marginalized populations in attaining social and economic equality through direct services and advocacy. As part of a broader National Urban League network of historic civil rights organizations throughout the United States, the Louisville Urban League, like all affiliates, is dedicated to fostering economic empowerment in order to elevate the standard of living

## Louisville Urban League Headquarters Cont'd

in historically underserved urban communities, with our focus on Jobs, Justice, Education, Health and Housing. Currently the Louisville Urban League's service area includes the Kentucky counties of Jefferson, Shelby, Oldham, Bullitt and Hardin, and the Indiana counties of Floyd, Harrison and Clark.



## Brown-Forman Campus

The Brown-Forman corporate headquarters in the city of Louisville, Kentucky, is currently home to nearly 1,000 employees. The company has a growing presence around the city, including a number of office and production locations. The 18th Street Campus, "The Campus," as it's often called, is the heart of the Louisville operations. Established in 1924, many of the historic buildings on this site have been renovated over the years to accommodate the growing company. The Campus includes nine office buildings, one production facility, and four warehouses. Two of the office buildings — the Garneau Building and the Forester Center — are listed on the National Register of Historic Places. The Garneau Building was built between 1894 and 1904, making it the one of the oldest distillery warehouses in Louisville and the oldest structure in the Brown-Forman complex. The roof of the old bottling house (behind Garneau) is home to one of Louisville's landmarks. Standing 68 feet in height, the Old Forester Bottle can be seen from almost anywhere in the downtown area. The bottle holds 100,000 gallons capacity, equal to 8.5 million generous portions of Old Forester.